

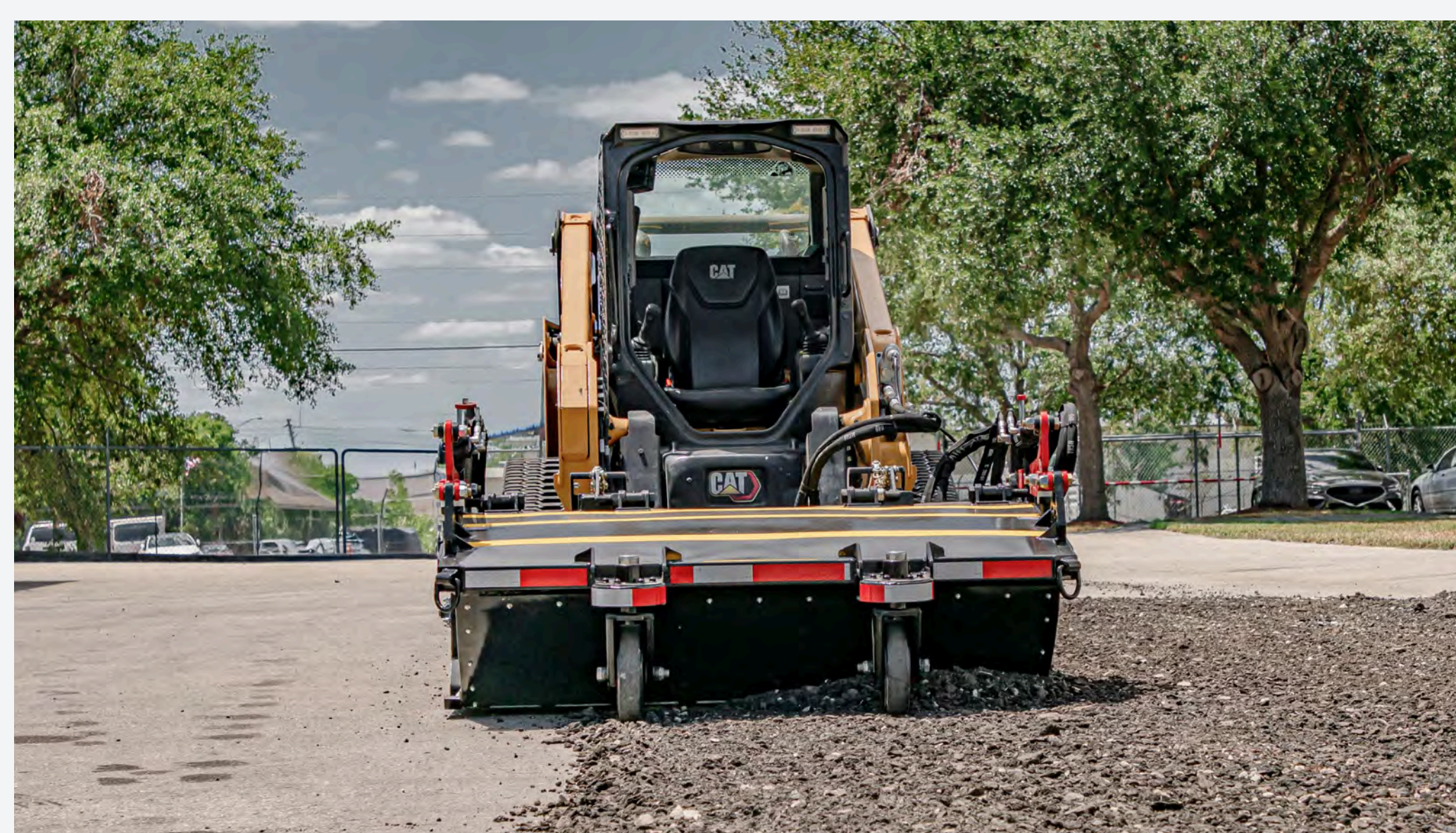
**SCM****SMITH  
CHALLENGER**  
MANUFACTURING & SERVICES, INC.**300****PAN SWEEPER**

## **FORWARD-DRIVING INNOVATION FOR UNMATCHED SWEEPING PERFORMANCE**

The revolutionary SCM 300 Pan Sweeper sets new standards with its industry exclusive forward-driving design, delivering unmatched safety and efficiency for road construction and maintenance operations.

**WATCH THE SCM 300 IN ACTION**

## **GAME-CHANGING FEATURES**



### **FORWARD OPERATION**

The only forward-driving pan sweeper in the industry, enhancing operator safety, visibility, and productivity on every job site while reducing operator fatigue and allowing better control.




### **ADVANCED TERRAIN FOLLOWING TECHNOLOGY**

Our patented system automatically adjusts to surface variations, eliminating manual controls and delivering consistent performance across changing terrain.



### **INNOVATIVE BRUSH SYSTEM**

Quick-change design and proprietary spring float system ensures optimal performance and reduces brush replacement time to under 30 minutes for maximum uptime.

**SMITH  
CHALLENGER**  
MANUFACTURING & SERVICES, INC.**TRANSFORM YOUR SWEEPING OPERATIONS TODAY** **863-248-2624** **SMITHCHALLENGER.COM**





## PROFESSIONAL CONSTRUCTION

- Heavy-duty 7,000 lb capacity caster wheels
- Variable height dumping operation
- 24" diameter tube style brush
- Available in 60", 72", and 84" sweeping widths
- 10-14 cubic foot hopper capacity

## ADVANCED FEATURES

- Hydraulic hopper dump system
- Replaceable hardened skid shoes
- Terrain following articulating coupler
- Spring float system for brush down pressure




## PERFECT FOR

- Road milling operations
- Asphalt paving projects
- Construction site cleanup
- Industrial maintenance



**TRANSFORM YOUR SWEEPING OPERATIONS TODAY**

 **863-248-2624**

 **SMITHCHALLENGER.COM**

**Compatible with skid steers and wheel loaders**

**Patent #10,309,069**